

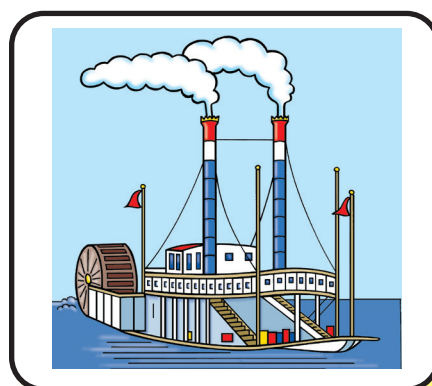
Simple Bisyllabics (C₁V₁C₂V₂) plus (CVC) with Pivot Phrase



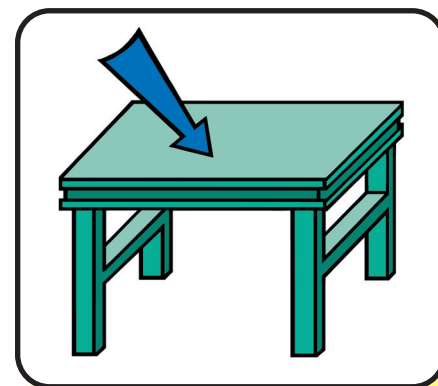
bunny hop



pa(n)da bea(r)



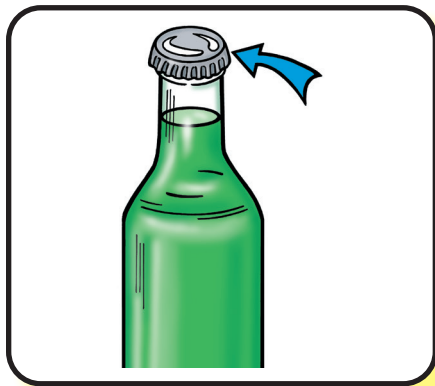
padd(le) boat
o



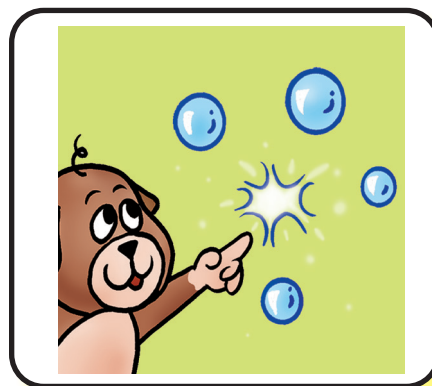
tab(le) top
o



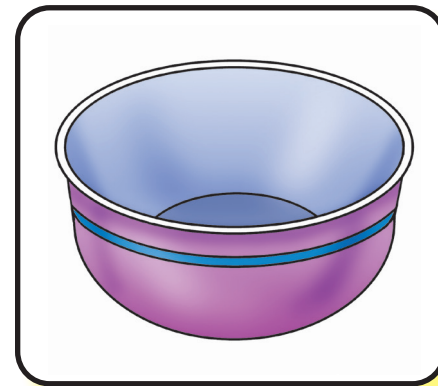
teddy bea(r)



bot(tle) top
o

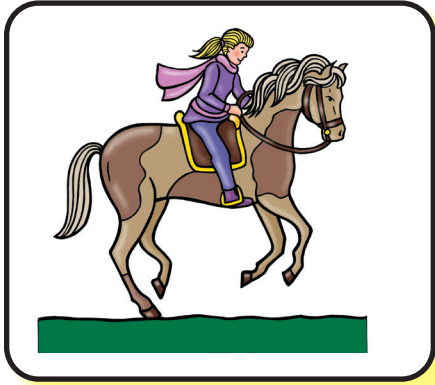


bubb(le) pop
o



em(p)ty bow(l)

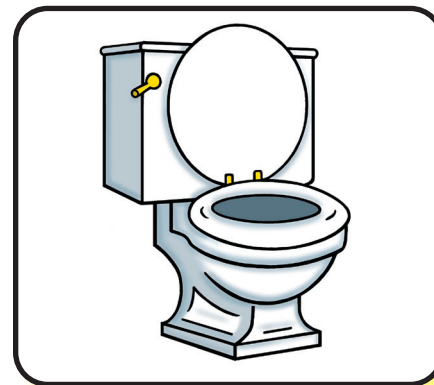
Simple Bisyllabics (C₁V₁C₂V₂) plus (CVC) with Pivot Phrase



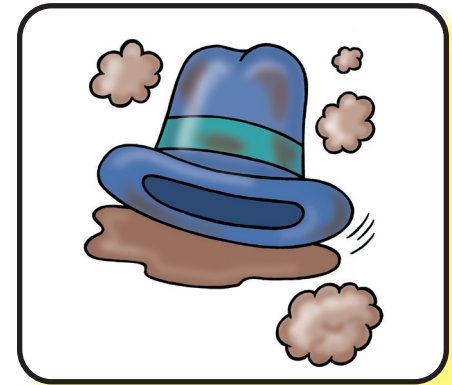
pony (r)ide
w



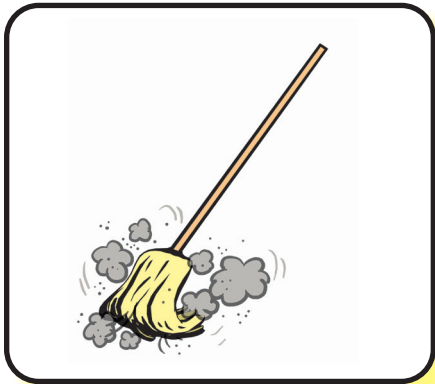
muddy boot



potty (ch)ai(r)
tay-o



di(r)ty hat



du(s)ty mop



pa(r)ty hat



happy day



baby do(ll)