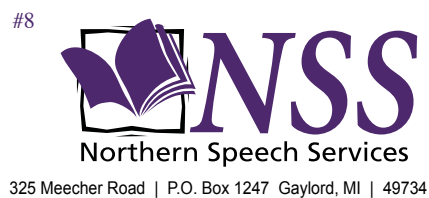
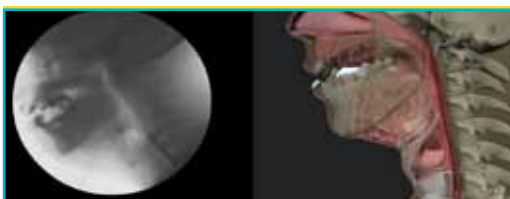


ATLANTA, GA
October 25-26, 2014



Speech Pathology CEUs



MEMPHIS, TN
SEPTEMBER 13-14, 2014



ATLANTA, GA
OCTOBER 25-26, 2014

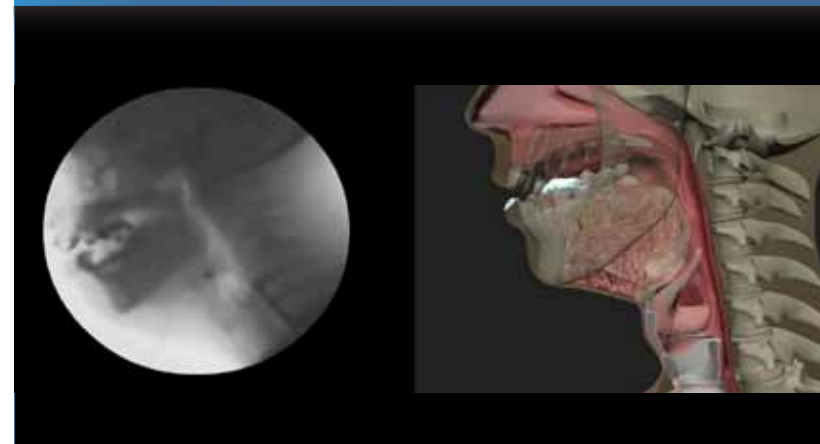
PSRST STD
U.S. POSTAGE
PAID
Petoskey, MI
Permit No. 110

> SPEECH PATHOLOGY CEU HEADQUARTERS

Additional CE event locations include
Oklahoma City, Somerset, NJ,
Milwaukee and Columbus.
Visit: www.NorthernSpeech.com

Sponsored by:
NSS
Northern Speech Services

MEMPHIS, TN
September 13-14, 2014



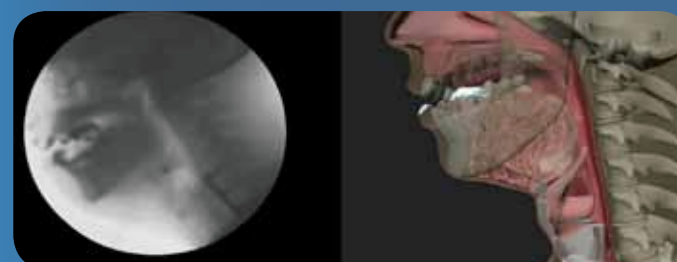
ATLANTA, GA
October 25-26, 2014



SPEECH PATHOLOGY CEUs | UPCOMING CONFERENCES

MEMPHIS, TN
September 13-14, 2014

Standardized Training in the Assessment and Targeted Treatment of Swallowing Disorders: The MBSImP™ And Dysphagia Practice



1.0 ASHA CEUs

ATLANTA, GA
October 25-26, 2014

Tracheostomy Tubes and Ventilators: What the Speech-Language Pathologist Needs To Know About Communication and Swallowing



1.0 ASHA CEUs

Tracheostomy Tubes and Ventilators:

What the Speech-Language Pathologist Needs To Know About Communication and Swallowing

1.0 ASHA CEUs

SEMINAR DESCRIPTION

Presented by a Speech-Language Pathologist and a Respiratory Therapist, this seminar will examine factors that affect communication and swallowing performance for adult and pediatric patients with tracheostomy tubes with and without mechanical ventilation. This seminar begins with the basics for clinicians new to this patient population. For the more experienced clinician (explained in terms that all will understand) this seminar also addresses the current state of the science in management of the tracheostomy and ventilator-dependent patient.

This seminar will feature hands-on lab sessions with a ventilator, trachs, and speaking valves allowing participants ample time to handle various devices and ask questions. The characteristics, advantages, and disadvantages of specific tracheostomy tubes and speaking valves will be explained to ensure best practice. SLP "must knows" related to patients on mechanical ventilation will be covered as well as issues related to secretion management. Methods to re-establish airflow to the upper airway will be discussed and demonstrated. In addition, the role of subglottic air pressure for safe swallow will be explained. Assessment procedures, treatment planning and implementation, as well as trach troubleshooting techniques will be presented. Diagnostic groups discussed will include head & neck cancer, COPD and others.

Content Disclosure: The content of this CE seminar does not focus exclusively on any specific proprietary product or service.

SPEAKERS



Roxann Diez Gross, PhD, CCC-SLP, is a leading expert, accomplished researcher, and frequently invited international lecturer on tracheostomy-dependent patients. Dr. Diez Gross is the Director of Research at The Children's Institute in Pittsburgh, PA. Prior to this position, she was the Director of the Swallowing Disorders Center at the University of Pittsburgh Medical Center. She is also an adjunct assistant professor in the Department of Communication Science and Disorders at the University of Pittsburgh.

Speaker Disclosure:
Financial - Roxann Diez Gross is a presenter of CE seminars and online courses sponsored by Northern Speech Services; receives speaker fees.

Nonfinancial - Roxann Diez Gross has no relevant nonfinancial relationships to disclose.



Lyndsi E. Yarkosky, BS, RRT, is a registered respiratory therapist who serves as the primary, multidisciplinary staff educator of respiratory care at The Children's Institute of Pittsburgh. She also provides education to families in the areas of ventilator management, tracheostomy care, suctioning, and handling emergency situations in the home. She has a wide variety of experience including neonatal intensive care, adult critical care, and in-patient pediatric rehabilitation. In addition to her clinical duties, Lyndsi is also an Adjunct Instructor at the University of Pittsburgh.

Speaker Disclosure:
Financial - Lyndsi Yarkosky is a presenter of CE courses sponsored by Northern Speech Services; receives speaker fees.

Financial - Lyndsi Yarkosky provides consulting services for Passy Muir Corporation; receives consulting fees.

Nonfinancial - Lyndsi Yarkosky has no relevant nonfinancial relationships to disclose.

See more details on this seminar: **Tracheostomy Tubes and Ventilators:**
What the Speech-Language Pathologist Needs To Know About Communication and Swallowing



Sponsor: Northern Speech Services



Standardized Training in the Assessment and Targeted Treatment of Swallowing Disorders: The MBSImP™ And Dysphagia Practice

Learn:

- To detect mild to profound deviations in swallow function using the evidence-based MBSImP scoring system
- Standardized reporting of results, impairment profiles and outcome indicators
- Targeted, evidence-based intervention for swallowing-specific impairment
- Objective documentation to treatment response and patient outcome

Appropriate for all speech-language pathologists who evaluate or treat adults with dysphagia in any clinical setting.

SPEAKER:

Bonnie Martin-Harris, PhD, CCC-SLP, BRS-S

1.0 ASHA CEUs



Tracheostomy Tubes and Ventilators: What the Speech-Language Pathologist Needs To Know About Communication and Swallowing

Learn:

- How respiratory cycles influence swallowing
- How lung volume affects swallowing
- Risk factors for aspiration for patients with trachs/vents
- How subglottic air pressure influences the swallow

PLUS! Hands on lab sessions with a ventilator, trachs and speaking valves.

SPEAKERS:

Roxann Diez Gross, PhD, CCC-SLP
Lyndsi E. Yarkosky, BS, RRT

1.0 ASHA CEUs

888.337.3866 | NorthernSpeech.com



MEMPHIS, TN
September 13-14, 2014



Standardized Training in the Assessment and Targeted Treatment of Swallowing Disorders: The MBSImP™ And Dysphagia Practice

1.0 ASHA CEUs

SEMINAR DESCRIPTION

This seminar will provide comprehensive instruction of the evidence-based components of swallowing function in adults. Specifically, participants will be introduced to the *Modified Barium Swallow Impairment Profile*, or *MBSImP™*, which provides a standardized method of clinical training and assessment of the swallowing mechanism. Participants will learn how the MBSImP identifies and assesses 17 components of the swallowing mechanism in adults and provides a standardized, objective profile of physiologic impairment.

Participants will learn how the MBSImP provides the means for clinicians to communicate MBS study results in an evidence-based manner that is specific, consistent and accurate. Discussed will be the rationale, development, and testing of the MBSImP. The neuromuscular structures involved in each of the 17 physiologic components will be reviewed using detailed anatomic illustrations, case-based examples, and data-driven animations.

Presented will be a thorough review of the MBSImP component-scores, including how these operationally defined scores provide quantification of unique observations for each swallowing component. The nuances of scoring more difficult components will be highlighted and explained. Participants will learn how swallowing profiles (component scores) can be translated to treatment strategies that directly target the impaired component(s).

Clinically practical application of the standardized approach will be illustrated in varied patient populations including neurologic disorders, head and neck cancers, and pulmonary disease. Tracking swallowing outcomes (physiologic, intake status, quality of life) over time and throughout the healthcare continuum will be demonstrated. Formulation of treatment goals using the approach and association of scores to overall dysphagia severity will be introduced. Standardized reporting using electronic, web-based methods will be demonstrated. Seminar focus is the adult population. Pediatric dysphagia will not be presented.

Prerequisite: Participant must have a degree in Speech-Language Pathology.
Content Disclosure: The content of this CE seminar focuses on the MBSImP protocol for low swallow impairment assessment. Other assessment protocols will not be included in this seminar.

Become a Registered MBSImP Clinician:

The only way to become a *Registered MBSImP Clinician* is to complete the MBSImP Online Training, which is separate from this above seminar and worth an additional 2.1 CEUs. Those attending this CE Seminar will receive a \$200 credit toward enrollment in the MBSImP Online Training. Learn more at www.northernSpeech.com/MBSImP. The online training is open only to speech-language pathologists.



SPEAKER

Bonnie Martin-Harris, PhD, CCC-SLP, BRS-S

is an internationally renowned lecturer, researcher and clinician. She is a Professor at the Medical University of South Carolina as well as the Director of the MUSC Evelyn Trammell Institute for Voice and Swallowing in Charleston, SC. Her latest research project was a rigorous, five-year study to test whether it would be possible to standardize swallow evaluation via the MBSS. This study produced the MBS Impairment Profile (*MBSImP*).

Speaker Financial Disclosure:
Financial - Presenter is employed by the Medical University of South Carolina (MUSC). MUSC receives royalty payments from Northern Speech related to enrollment tuition of the MBSImP Online Training.

Financial - Receives speaker fees for onsite and online seminars developed for Northern Speech.

Financial - Research and development of MBSImP partially funded by grants from Bracco Diagnostics.

Nonfinancial - No relevant nonfinancial relationships to disclose.

MEMPHIS, TN SEPTEMBER 13-14, 2014

Standardized Training in the Assessment and Targeted Treatment of Swallowing Disorders:

The MBSImP™ And Dysphagia Practice

1.0 ASHA CEUs

SEMINAR LOCATION

MEMPHIS, TN

September 13-14, 2014

Methodist University Hospital

1265 Union Ave

Memphis, TN 38104

Phone: 901-516-7000

The Medical Staff Auditorium is located on the first floor. If you enter the hospital at the temporary main entrance on Bellevue, cross the lobby and head east (right) into the main corridor of the hospital, past the Gift Shop/Café. Take a right at the end of that hall. Straight across to the end of that short hall and a right puts you at the door to the Medical Staff Auditorium.

Parking:

Free. Turn R off Eastmoreland into main visitors parking lot. Cross Eastmoreland to Corner of Bellevue & Eastmoreland for main entrance to MUH.

TUITION

\$315 Individual
\$295 each for groups of 2+
\$275 each for groups of 5+

*Groups MUST register together

SPACE IS LIMITED AND REGISTRATION MUST BE CONFIRMED BY CREDIT CARD, CHECK OR PURCHASE ORDER.

PREREQUISITE:
Must have a degree in Speech-Language Pathology.

Sleeping rooms:

Double Tree Downtown Hotel

185 Union Ave.
Memphis, TN 38103
(About 2 miles from conference facility)

Phone # 901-528-1800 – Ask for hospital rate – No room block so negotiate your best rate

REGISTER TODAY!

SEMINAR OUTLINE

DAY ONE

7:30-7:50 Check In and Onsite Registration (Coffee and Tea)

8:00-12:00 Rationale and Development of MBSImP (break from 9:30 to 9:45)

- Why Standardize and What Should Be Standardized?
- Research, Development, Testing, and Validation of the MBSImP

Implementing a Standardized MBS Study Protocol

- Viscosity, Volume, Method of Administration
- Identifying Impairment vs. Assessing Function
- Patient Safety Considerations
- Clinical Practicality

Collaboration with Radiology

- Esophageal Assessment and SLP's Role
- Radiation Exposure Concerns

Physiologic Components of the Swallowing Mechanism

- The 17 Physiologic Components Assessed via the MBSImP
- Radiographic Identification & Neuromuscular Structures

12:00-1:00 Lunch on Own

1:00-4:00 MBSImP Component Scores: Objectively Identifying Impairment (break from 2:30 to 2:45)

- Introduction of Impairment Scores via Animation and VFSS Examples
- Group Practice in Scoring Impairment via MBSImP Methodology
- Implications for Targeted Treatment

4:00 Adjourn and Sign Out

DAY TWO

7:30-7:55 Sign In (Coffee and Tea)

8:00-12:00 MBSImP Component Scores Con't (break from 9:30 to 9:45)

- MBSImP Impairment Scores Con't
- Overall Impression Scoring & Targeted Treatment

Becoming a "Registered MBSImP Clinician"

- Overview of the MBSImP Online Training
- Standardized Patient Reporting Tools
- Swallow Data Registry and Research Implications

Standardized Reporting of Results

- Objectively Assessing Impairment: Swallowing Profiles
- Tracking Swallowing Outcomes: Physiologic, Intake Status, Quality-of-Life
- Objective Documentation to Treatment Response and Patient Outcome

Targeted Treatment in the Adult Population

- Evidence-Base Intervention for Swallowing-Specific Impairment
- Patient Cases: Neurologic Disorders, H&N Cancers and Pulmonary Disease

12:00 Adjourn, Sign Out and Certificates

Intended Audience:

Speech-Language Pathologists in clinical practice who evaluate and treat adults with dysphagia. LEVEL: Intermediate.

Space is limited. Register today at www.northernSpeech.com/seminars
Phone: 888-337-3866 Fax: 888-696-9655 info@northernSpeech.com

REGISTRATION INFORMATION

4 Ways to Register!

- Online: www.northernSpeech.com/seminars
- Phone: 888-337-3866
- Fax: 888-696-9655
- Mail: NSS, P.O. Box 1247, Gaylord, MI 49734

MEMPHIS TN • September 13-14, 2014 (#2235)

ATLANTA, GA • October 25-26, 2014 (#2241)
Tracheostomy Tubes and Ventilators

Please print very clearly

Seminar Location _____ Seminar Date _____

Name of Registrant _____

ASHA Account Number _____

State License Number _____

Discipline for CEU Processing SLP Other _____

Work Facility Name & Address _____

Your Employment Setting Hospital Private Practice Clinic University Faculty

Long-Term Care School Home Health Student Other _____

Home Address _____

ATLANTA, GA OCTOBER 25-26, 2014

Tracheostomy Tubes and Ventilators: What the Speech-Language Pathologist Needs To Know About Communication and Swallowing

SEMINAR LOCATION

DECATUR, GA

October 25-26, 2014

DeKalb Medical Center

2701 North Decatur Road

Decatur, GA 30033

Phone: 404-501-1000

Conference Location: Bobbie Bailey Women's and Surgery Tower adjacent to the main hospital entrance. If you enter the main hospital entrance go to the information desk and they will direct you to the conference location.

Parking: There is parking located in the deck adjacent to the hospital emergency room as well as under the Bobbie Bailey Women's and Surgery Tower, well marked with signs. One parking pass per day is covered by DeKalb Medical Center with a voucher you will receive during course check in. Please take a parking ticket when you arrive and when you leave give your attendant your parking pass.

Hotel Accommodations: The Holiday Inn Express is about one mile from the conference venue. Ask for the Northern Speech special rate of \$129 and book at least 45 days out to guarantee space and rate. Reference group code "NSS" to receive special rate.

Hotel address: 2183 North Decatur Road, Decatur, GA 30030

Hotel Phone: 404-320-0888



Northern Speech Services is approved by the Continuing Education Board of the American Speech-Language-Hearing Association (ASHA) to provide continuing education activities in speech-language pathology and audiology. See course information for number of ASHA CEUs, instructional level and content area. ASHA CE Provider approval does not imply endorsement of course content, specific products or clinical procedures.

This course is offered for 1.0 ASHA CEUs (Intermediate level, Professional area).

TUITION

\$315 Individual
\$295 each for groups of 2+
\$275 each for groups of 5+

*Groups MUST register together

SPACE IS LIMITED AND REGISTRATION MUST BE CONFIRMED BY CREDIT CARD, CHECK OR PURCHASE ORDER.

1.0 ASHA CEUs



SEMINAR OBJECTIVES

At seminar conclusion, participants will be able to:

- Identify various tracheostomy tubes and be able to discuss their impact on speech and swallowing.
- Describe basic swallowing function in relation to individuals who have tracheostomy tubes and/or who are on mechanical ventilation.
- Outline mechanical ventilation and in-line placement.
- State the role and importance of subglottic air pressure and upper airway airflow.
- Identify respiratory factors that have a negative impact on swallowing and weaning.
- Discuss how one-way speaking valves can improve swallowing function.

SEMINAR OUTLINE

DAY ONE

7:30-7:50 Check In and Onsite Registration (Coffee and Tea)

7:55-8:00 General Seminar Information

8:00-8:30 Review of Head and Neck Anatomy Related to Respiratory Function and Trachs and Vents

8:30-10:00 Update on Tracheostomy Tubes

- Purpose
- Types
- Application Process

10:00-10:15 Break

10:15-11:45 Update on Speaking Valves

- Purpose
- Types
- Placement
- Management
- Methods To Re-Establish Airflow to Upper Airway

11:45-12:45 Lunch on Own

12:45-1:30 Trach Demonstration

1:30-2:15 Subglottic Pressure Theory To Improve Swallow Function

2:15-2:30 Break

2:30-4:00 Subglottic Pressure Theory continued

4:00 Adjourn and Sign Out

DAY TWO

7:30-7:55 Sign In (Coffee and Tea)

7:55-8:00 General Seminar Information

8:00-10:00 Mechanical Ventilation and Weaning

- What the SLP Needs To Know from the Respiratory Therapist
- In-Line Speaking Valve Placement

10:00-10:15 Break

10:15-11:15 Ventilator Demonstration

11:15-12:00 Integrating Important Pulmonary and Respiratory Concepts into Daily Management and Treatment

- COPD and Parkinson's Disease: Special Considerations
- Are We Doing Respiratory-Based Therapy Without Realizing It?
- Case Studies To Improve Troubleshooting and Problem-Solving Skills
- Future Directions

12:00 Adjourn, Sign Out and Certificates

Intended Audience:

Speech-Language Pathologists and other interested professionals who treat tracheostomy- and ventilator-dependent patients. LEVEL: Intermediate.

REGISTER TODAY!

MBSImP MBSImP online training

Learn more at www.northernSpeech.com/MBSImP

ACCREDITATION



Northern Speech Services is approved by the Continuing Education Board of the American Speech-Language-Hearing Association (ASHA) to provide continuing education activities in speech-language pathology and audiology. See course information for number of ASHA CEUs, instructional level and content area. ASHA CE Provider approval does not imply endorsement of course content, specific products or clinical procedures.

This course is offered for 1.0 ASHA CEUs (Intermediate level, Professional area). FLORIDA: NSS is approved as a provider of continuing education by the Florida Speech-Language Pathology and Audiology Board. Provider #SPA-026.

> More Opportunities to Learn!

9 CEUs

#e68 Head and Neck Cancer Across the Continuum of Care: Addressing Swallowing Challenges
by Paula Sullivan, MS, CCC-SLP, BRS-S

The most comprehensive Head and Neck Cancer online course ever offered for the SLP. Provides an in-depth examination of head and neck cancer, its presentation, functional sequelae, evaluation approaches, and treatment options.

OVER 65 Online CEU COURSES

View all courses NorthernSpeech.com/CEUs

Home Study Course
2013 Charleston Swallowing Conference
Evidence-Based Dysphagia Management

Online CEU #e108
12.5 hours
\$179

NEW!

Available Online Now!
A select group of speakers have recorded the topics they presented at the 2013 Charleston Swallowing Conference for this clinically relevant home study course. Participants will learn evidence-based dysphagia interventions that will influence and shape best practice in the coming years.