

SPEAKER

Bonnie Martin-Harris, PhD, CCC-SLP, BCS-S,

is an internationally renowned lecturer, researcher and clinician. She is a Professor at the Medical University of South Carolina as well as the Director of the MUSC Evelyn Trammell Institute for Voice and Swallowing in Charleston, SC. She led a rigorous, five-year study to test whether it would be possible to standardize swallow evaluation via the MBSS. This study produced the MBS Impairment Profile (MBSImP). Now that the MBSImP is becoming standard practice in dysphagia service delivery, Dr. Martin-Harris is developing intervention protocols that are related to the disorders identified when using the MBSImP assessment protocol. Dr. Martin-Harris believes that moving in the direction of more standardized and evidence-based practice will strengthen the role of the speech-language pathologist in the medical community and result in better patient outcomes.

Speaker Financial Disclosure:

Financial - Presenter is employed by the Medical University of South Carolina (MUSC). MUSC receives royalty payments from Northern Speech related to enrollment tuition of the MBSImP Online Training.

Financial - Receives speaker fees for onsite and online seminars developed for Northern Speech.

Financial - Research and development of MBSImP partially funded by grants from Bracco Diagnostics.

Nonfinancial - No relevant nonfinancial relationships to disclose.

LEARNER OUTCOMES

At the conclusion of this didactic session, the participant will be able to:

1. Identify the physiologic mechanisms of swallowing.
2. List the critical components of swallowing assessment and impairment.
3. Explain the coordination and optimal patterning between breathing and swallowing function.
4. Estimate the severity of swallowing impairment using MBSImP scores and patient oriented measures.
5. Develop targeted, evidenced-based treatment plans including the establishment of measureable goals.
6. Reference the results of tested interventions that directly target cross-system interactions of the upper aerodigestive tract.
7. Summarize the importance of standardized training, assessment, outcome tracking, and reporting.

Who Should Attend?

SLPs who work with dysphagic patients across the care continuum, including:

- Skilled Nursing
- Long-Term Care
- Home Health
- Graduate Students
- Hospital Acute
- Hospital Rehab
- Hospital Outpatient
- University Faculty

Attendees do not need to conduct MBS exams to benefit from this course.

SEMINAR DESCRIPTION

The assessment and treatment of swallowing disorders is a critical area of speech-language pathology practice that greatly impacts patient health and quality of life outcomes. Years of clinical practice and research support the efficacy for implementing a systematic, standardized approach to training the physiologic mechanism of swallowing, identification of swallowing impairment, and evidence-based treatment applications that target the mechanisms of impairment. This course will address the critical aspects of standardized dysphagia assessment and treatment in adults.

Using the *MBSImP* component scoring system, the structures involved in each physiologic component will be reviewed. Videofluoroscopic radiographs, paired with data driven animations, and detailed anatomic medical illustrations of the muscles and nerves involved in each component will be the method for instruction. Critical components of swallowing assessment will be reviewed. A novel approach for classifying *dysphagia severity* using a combination of physiologic and patient oriented measures will be introduced.

The application of *targeted interventions* and treatment planning based on specific impairments of swallowing will be covered. Evidence-based interventions, including demonstrations of visual feedback and training methods for strength training and respiratory swallowing coordination will be illustrated. Participants will learn to apply and track the outcomes of treatments that target the physiologic components of swallowing toward optimization of function.

Participants will learn to set appropriate goals and identify and track patient outcomes. Formulation of treatment goals using the approach and association of scores to overall dysphagia severity will be introduced. Tracking swallowing outcomes (physiologic, intake status, quality of life) over time and throughout the health care continuum will be demonstrated.

Case-based instruction will demonstrate the application of targeted interventions and treatment planning based on assessment outcomes in patients with dysphagia related to neurologic disorders, cancers of the head and neck, and pulmonary disease.

Content Disclosure: The content of this CE seminar focuses on the MBSImP component scoring system. Other assessment protocols for planning intervention programs will not be included in this seminar.

Register at www.NorthernSpeech.com | Phone: 888-337-3866 | Fax: 888-696-9655

Prsr. Std.
U.S. Postage Paid
Petoskey, MI
Permit No. 110

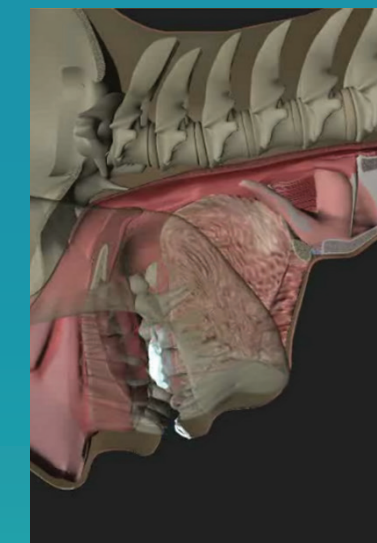


#7

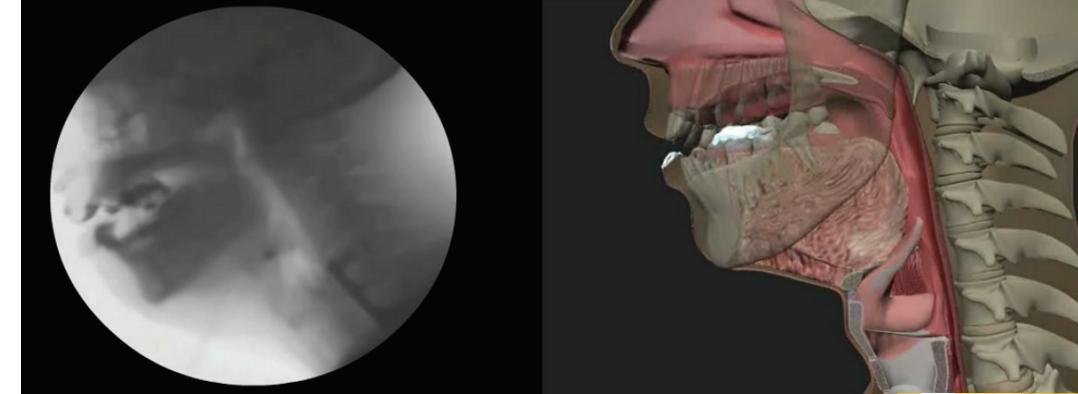
1.0 ASHA
CEUs

Targeted, Evidence-Based Treatment
for Swallowing Impairment Using
a Standardized Approach Across
the Continuum of Care

CLEARWATER, FL
October 3-4, 2015
COLUMBUS, OH
October 24-25, 2015



SPEECH PATHOLOGY CEUs



1.0 ASHA
CEUs

Targeted, Evidence-Based Treatment
for Swallowing Impairment Using
a Standardized Approach Across
the Continuum of Care

CLEARWATER, FL
October 3-4, 2015

COLUMBUS, OH
October 24-25, 2015



SPEAKER:
Bonnie Martin-Harris,
PhD, CCC-SLP, BCS-S

Sponsored by:
NSS
Northern Speech Services



888.337.3866
NorthernSpeech.com



