

## HAMILTON, ON

September 15-16, 2012

1.2 ASHA CEUs INCLUDED

### SPEAKERS

**Robert Arnold**  
SLP.D, CCC-SLP, BRS-S

**Veda Cochran**  
RN, BSN



## Medical Speech Pathology:

### The Influence of Body Systems on Communication and Swallowing Interventions

### SEMINAR DESCRIPTION

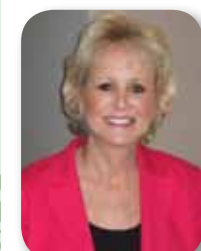
Intended for the speech-language pathologist, this intermediate-level, cutting-edge seminar integrates a holistic review of anatomy and physiology of the critical systems of the human body as related to medical speech pathology. Presented will be valuable information on how body systems function to promote, delay, or impede progress with intervention programs targeting acquired communication and/or swallowing disorders. Foundational concepts for understanding the relationships between pathophysiology, laboratory studies (e.g. blood, urine, etc.), and pharmacological interventions are introduced. Learn how blood sugar levels and brain cell sodium levels can affect communication and swallowing. Special emphasis is placed on the impact of disease and the medical management process as related specifically to communication and swallowing disorders. This seminar puts it all together for the SLP and participants will leave with a better understanding of how body systems function in relation to interventions employed by the speech-language pathologist.

### SPEAKERS



**Robert J. Arnold, SLP.D, CCC-SLP, BRS-S**, is the Chief Clinical Officer for Southeastern Biocommunication Associates, LLC. Dr. Arnold has over 20 years of experience in medical speech-language pathology as a diagnostician, therapist, clinical research scientist, author, inventor, and adjunct professor. He has made numerous presentations at the state, regional, and national level. Dr. Arnold has been twice presented with the Distinguished Clinical Achievement Award by the Speech and Hearing Association of Alabama and he is a Board Recognized Specialist in Swallowing and Swallowing Disorders.

**Speaker Disclosure:**  
Employer: Southeastern Biocommunication Associates, LLC, Hoover, AL  
Financial — Author of online CEU courses by Northern Speech Services; receives royalty payments.  
Nonfinancial — None.



**Veda Cochran, RN, BSN**, is the Chief Operating Officer for Southeastern Biocommunication Associates, LLC. She has over 30 years of nursing experience in home health and hospice. Over her career, Ms. Cochran has been directly involved with over 25 successful business start ups in the roles of consultant, administrator, vice president, and Chief Operating Officer. She has also been engaged in industry research & development of innovative interdisciplinary healthcare delivery models for rehab, long-term care, home health and hospice.

**Speaker Disclosure:**  
Employer: Southeastern Biocommunication Associates, LLC, Hoover, AL  
Financial — None.  
Nonfinancial — None.



NSS  
Northern Speech Services  
325 Meecher Road | P.O. Box 1247 Gaylord, MI | 49734

A 30-year history of providing quality continuing education programs.

## EDUCATION EVENTS FOR SLPs



**WEST BLOOMFIELD, MI**  
October 6-7, 2012

**HAMILTON, ON**  
September 15-16, 2012

Register Today!



## Continuing Education Seminars For Speech-Language Pathologists

WEST BLOOMFIELD, MI

### WEST BLOOMFIELD, MI

October 6-7, 2012



1.0 ASHA CEUs

### The MBSImP™ And Dysphagia Practice:

#### Targeted Intervention Through Standardized Physiologic Swallow Assessment

### HAMILTON, ON

September 15-16, 2012



1.2 ASHA CEUs

### Medical Speech Pathology:

#### The Influence of Body Systems on Communication and Swallowing Interventions

HAMILTON, ON

Prsrtd Std.  
U.S. Postage  
PAID  
Northern Speech  
Services

Also see

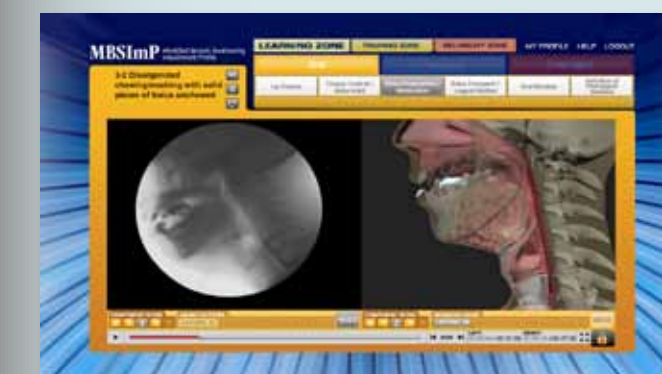
over 20 additional CE Events across the US, including Dallas, Columbus, and Kansas City. Visit: [www.northernspeech.com](http://www.northernspeech.com)

SAVE!! ...up to \$30 with our group tuition rates — see inside!

888.337.3866  
[www.northernspeech.com](http://www.northernspeech.com)

### WEST BLOOMFIELD, MI

October 6-7, 2012



1.0 ASHA CEUs

### The MBSImP™ And Dysphagia Practice:

#### Targeted Intervention Through Standardized Physiologic Swallow Assessment

#### Learn:

- To detect mild to profound deviations in swallow function using the evidence-based MBSImP scoring system
- Standardized reporting of results, impairment profiles and outcome indicators
- Targeted, evidence-based intervention for swallowing-specific impairment
- Objective documentation to treatment response and patient outcome

*Appropriate for all speech-language pathologists who evaluate or treat adults with dysphagia in any clinical setting.*

**SPEAKER:**  
**Bonnie Martin-Harris**, PhD, CCC-SLP, BRS-S

Sponsored by:



### HAMILTON, ON

September 15-16, 2012



1.2 ASHA CEUs

### Medical Speech Pathology:

#### The Influence of Body Systems on Communication and Swallowing Interventions

#### Learn:

- Anatomy and physiology of critical body systems as related to medical speech pathology
- Frequently encountered disease states known to have adverse impacts on communication and swallowing
- Correlations between abnormal lab values and communication and swallowing disorders
- To identify medications for potential benefits or detriments pertaining to communication and swallowing

**SPEAKERS:**  
**Robert Arnold**, SLP.D, CCC-SLP, BRS-S  
**Veda Cochran**, RN, BSN

## WEST BLOOMFIELD, MI

October 6-7, 2012

1.0 ASHA CEUs INCLUDED

### SPEAKER

**Bonnie Martin-Harris**, PhD, CCC-SLP, BRS-S



**Bonnie Martin-Harris, PhD, CCC-SLP, BRS-S**,

is an internationally renowned lecturer, researcher and clinician. She is a Professor at the Medical University of South Carolina as well as the Director of the MUSC Evelyn Trammell Institute for Voice and Swallowing in Charleston, SC. Her latest research project was a rigorous, five-year study to test whether it would be possible to standardize swallow evaluation via the MBSS. This study produced the MBS Impairment Profile (MBSImP).

#### Speaker Financial Disclosure:

Presenter is employed by the Medical University of South Carolina (MUSC). MUSC receives royalty payments from Northern Speech related to enrollment tuition of the MBSImP Online Training.

Nonfinancial — none.

## The MBSImP™ And Dysphagia Practice:

### Targeted Intervention Through Standardized Physiologic Swallow Assessment

### SEMINAR DESCRIPTION

This seminar addresses the adult population and is designed for clinicians who conduct MBS exams, treat patients following an MBS exam, or both, in any setting along the healthcare continuum. The format includes an evidence, case-based approach to learning the implementation and interpretation of a standardized modified barium swallowing examination using the MBSImP™. Participants will learn to execute a standardized and efficient examination that permits flexibility for safe and immediate introduction of interventions based on the nature of impaired components. Implications of the MBSImP approach on radiation safety will be presented. Performing and treating clinicians will learn to link oropharyngeal physiologic components to potential levels of disruption in sensor-motor control across patient diagnoses.

Participants will learn to detect mild to profound deviations in normal function across various ages based on new evidence using the MBSImP component scoring system. The potential application for neuroprotective and neurorehabilitative exercises will be presented. The functional relationships between esophageal clearance abnormalities and oropharyngeal swallowing disorders will be discussed. The application of targeted interventions and treatment planning based on specific impairments of swallowing will be covered. Participants will receive sample reports and learn to create electronic, web-based patient reports based on MBSImP findings.

Outcome tracking within a single healthcare facility or healthcare system that supports the value of the MBS study and swallowing treatment will be demanded in a climate of healthcare reform. To that end, participants will learn to set appropriate goals and identify and track patient outcomes. Participants will also learn how de-identified MBSImP data creates opportunity for participation in multi-site clinical research and advancement of swallowing practice in the speech-language pathology community. (Seminar focus is the adult population. Pediatric dysphagia will not be presented.)

#### Become a Registered MBSImP Clinician:

The only way to become a Registered MBSImP Clinician is to complete the MBSImP Web-Based Training, which is separate from this above seminar and worth an additional 2.1 CEUs. Those attending this CE Seminar will receive a \$200 credit toward enrollment in the MBSImP web-based training. Learn more at [www.northernspeech.com/MBSImP](http://www.northernspeech.com/MBSImP). The web-based training is open only to speech-language pathologists.





## The MBSImP™ And Dysphagia Practice:

Targeted Intervention Through Standardized Physiologic Swallow Assessment

1.0 ASHA CEUs

**PRICE:** US dollars  
**2 or more \$299.00**  
**5 or more \$259.00**

**REGISTER EARLY - SPACE IS LIMITED** Late Fee: Add \$20 if registering less than two weeks prior to seminar.



Become a Registered MBSImP Clinician! Learn more at [www.northernspeech.com/MBSImP](http://www.northernspeech.com/MBSImP)

## SEMINAR LOCATION

### Henry Ford West Bloomfield Hospital\*

Demonstration Room, Main Floor  
 6777 W. Maple Road  
 West Bloomfield, MI 48322

Phone: 248-325-1000

\*Visit [www.northernspeech.com/seminars](http://www.northernspeech.com/seminars) for parking and hotel information.

## SEMINAR OBJECTIVES

At seminar conclusion, participants will be able to:

- Conduct and advocate for standardized, valid and reliable approaches to MBS assessment that maximize clinical yield and minimize radiation exposure.
- Identify 17 physiologic components of swallowing function and detail levels of impairment.
- Differentiate normal function from impairment across the aging continuum.
- Interpret MBSImP reports from referring clinicians and execute a targeted, evidence-based treatment.
- Develop standardized patient reports including goal setting and outcome tracking.
- Develop clinical competency measures for conducting swallowing assessments using the MBSImP approach.
- Create profiles of swallowing impairment across the natural history of a condition or course of recovery.



Northern Speech Services is approved by the Continuing Education Board of the American Speech-Language-Hearing Association (ASHA) to provide continuing education activities in speech-language pathology and audiology. See course information for number of ASHA CEUs, instructional level and content area. ASHA CE Provider approval does not imply endorsement of course content, specific products or clinical procedures.

**Intended Audience:** Speech-Language Pathologists in clinical practice who evaluate and treat adults with dysphagia.  
**LEVEL:** Intermediate.

10 CEEs

This course is offered for 1.0 ASHA CEUs (Intermediate level, Professional area).

## SEMINAR OUTLINE

### DAY ONE

- 7:30-7:55 Check In and Onsite Registration (Coffee and Tea)  
 8:00-11:45 **Session One (break from 9:30 to 9:45)**
- Neural underpinnings of physiologic components of oropharyngeal swallowing
  - Review and radiographic identification of 17 physiologic components of swallowing
  - Clinical symptom correlates of physiologic swallowing impairment and aspiration
  - MBSImP findings traced to neuromotor control mechanism

### Lunch on Own

- 11:45-12:45 **Session Two (break from 2:30 to 2:45)**
- Review of commonly occurring types of swallowing impairment: interdependency, levels of severity, clinical implications
  - What's normal "impairment" across the aging continuum?
  - SLP's role in assessment of esophageal function: implications of esophageal impairment on oropharyngeal swallowing disorders and approaches to treatment
  - Identification of mild-profound dysfunction and implications for neuroprotective and neurorehabilitative exercise
  - Targeted, evidence-based intervention for swallowing-specific impairment

### 4:00 Adjourn and Sign Out

### DAY TWO

- 7:30-7:55 Sign In (Coffee and Tea)  
 8:00-12:00 **Session Three (break from 9:30 to 9:45)**
- Standardized reporting of results, impairment profiles and outcome indicators (health, quality of life, oral intake and nutritional status) using the MBSImP approach
  - Mapping swallowing profiles across the natural history of disease and recovery
  - SLP to Clinical Researcher: opportunity for multi-site clinical investigations and advancement of dysphagia research
  - Patient cases: acute neurologic (CVA, trauma), pulmonary disease (obstructive/restrictive/mixed), head & neck cancer, chronic and progressive neurologic disease
  - Initial assessment (identification and scoring)
  - Targeted, evidence-based treatments
  - Objective documentation to treatment response and patient outcome

### 12:00 Adjourn, Sign Out, and Certificates

## SEMINAR REGISTRATION FORM

Register Online: [www.northernspeech.com/seminars](http://www.northernspeech.com/seminars)

WEST BLOOMFIELD, MI OCTOBER 6-7, 2012  
**MBSImP (#2145)**

HAMILTON, ON SEPTEMBER 15-16, 2012  
**Body Systems (#2136)**

SPACE IS LIMITED AND REGISTRATION MUST BE CONFIRMED BY CREDIT CARD, CHECK OR PURCHASE ORDER. (Make check payable to **NSS**.)

PLEASE PRINT

Seminar # \_\_\_\_\_ Seminar Date \_\_\_\_\_

Seminar Title \_\_\_\_\_

Seminar Location \_\_\_\_\_

Name of Registrant \_\_\_\_\_

ASHA Account Number \_\_\_\_\_

CASLPA Member Number \_\_\_\_\_

State / Provincial Lic # \_\_\_\_\_

Discipline required for CEU / CEE processing  SLP

Other (please specify) \_\_\_\_\_

Home Address \_\_\_\_\_

\_\_\_\_\_

\_\_\_\_\_

Work Facility Name & Address \_\_\_\_\_

\_\_\_\_\_

\_\_\_\_\_

Please indicate numbers where you can be reached if necessary

Phone: Work (\_\_\_\_) \_\_\_\_\_

Home (\_\_\_\_) \_\_\_\_\_

Cell (\_\_\_\_) \_\_\_\_\_

Email Address \_\_\_\_\_

Tuition Amount (USD) \_\_\_\_\_

Credit Card # \_\_\_\_\_

\_\_\_\_\_

Expiration Date \_\_\_\_\_ CV #\* \_\_\_\_\_

\*CV# is the last 3 digits on the signature panel of Visa/MC/Discover + 4 digit # above card # on front of Amx

Card Holder's Name \_\_\_\_\_

Card Holder's Signature \_\_\_\_\_

Card Holder's Address \_\_\_\_\_

\_\_\_\_\_

\_\_\_\_\_

Purchase Order # \_\_\_\_\_

Check Issued From \_\_\_\_\_

PO Contact Phone # \_\_\_\_\_

\_\_\_\_\_

Mail Registration To: **NSS, P.O. Box 1247, Gaylord, MI 49734**

or Call: 888.337.3866 Fax: 888.696.9655 email: [info@northernspeech.com](mailto:info@northernspeech.com)



## Medical Speech Pathology:

The Influence of Body Systems on Communication and Swallowing Interventions

1.2 ASHA CEUs

## SEMINAR LOCATION

### St. Joseph's Charlton Campus

Juravinski Tower  
 Miller Amphitheater  
 50 Charlton Avenue East  
 Hamilton, ON L8N 4A6

Phone: 905-522-4941

Parking: \$9.00 daily. Use visitor parking areas.

### Accommodations:

Sheraton Hamilton Hotel  
 116 King Street West  
 Hamilton, ON L8P 4V3  
 Phone: 905-529-5515

No room block – please negotiate your best rate.

## ACCREDITATION

**Intended Audience:** Speech-Language Pathologists in clinical practice who evaluate and treat clients with communication and swallowing disorders.  
**LEVEL:** Intermediate.



Northern Speech Services is approved by the Continuing Education Board of the American Speech-Language-Hearing Association (ASHA) to provide continuing education activities in speech-language pathology and audiology. See course information for number of ASHA CEUs, instructional level and content area. ASHA CE Provider approval does not imply endorsement of course content, specific products or clinical procedures.

12 CEEs

This course is offered for 1.2 ASHA CEUs (Intermediate level, Professional area).

**PRICE:** \$299.00  
**2 or more \$279.00**  
**5 or more \$259.00**

Prices in US dollars  
**REGISTER EARLY - SPACE IS LIMITED**

Late Fee: Add \$20 if registering less than two weeks prior to seminar.

## SEMINAR OBJECTIVES

At seminar conclusion, participants will be able to:

- Develop a holistic perspective of body systems and their respective impacts on communication and swallowing processes.
- Acquire foundational knowledge in rarely reviewed but often encountered disease states known to have adverse impacts on communication and swallowing.
- Identify abnormal lab values and how they may or may not be related to a given communication and/or swallowing disorder.
- Review medications for potential benefits and detriments pertaining to communication and swallowing.

## SEMINAR OUTLINE

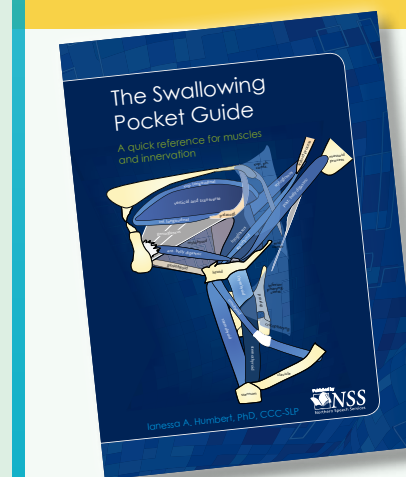
### DAY ONE (Saturday)

- 7:30-7:55 **Check In and Onsite Registration (Coffee and Tea)**  
 7:55-8:00 General Seminar Information  
 8:00-10:30 A Focused Review of Anatomy & Physiology of the Human Body: The SLP's Perspective  
 10:30-10:45 **Break**  
 10:45-12:15 Anatomy & Physiology *continued*  
 12:15-1:15 **Lunch on Own**  
 1:15-2:45 Functional Applications of Pathophysiology for the SLP  
 2:45-3:00 **Break**  
 3:00-4:30 Pathophysiology *continued*  
 4:30 **Adjourn and Sign Out**

### DAY TWO (Sunday)

- 7:30-7:55 **Sign In (Coffee and Tea)**  
 7:55-8:00 General Seminar Information  
 8:00-10:00 Body Fluids And Lab Values: The Body's Crystal Ball  
 10:00-10:15 **Break**  
 10:15-12:15 Pharmacology: A Two-Edged Sword of Intervention  
 12:15-12:30 **Break**  
 12:30-1:30 Case Studies In Medical Speech-Language Pathology  
 1:30 **Adjourn, Sign Out and Certificates**

## Dysphagia Resources!



### The Swallowing Pocket Guide

A quick reference for SLPs covering muscles and innervation

**DESCRIPTION:** A compact reference filled with detailed pictures, physiology summaries, nerves, and muscle names and function. Contents target the tongue, soft palate, pharynx, hyoid bone and larynx, and the upper esophageal sphincter. Includes 25 muscles, 7 structures, 5 cranial nerves, and 4 phases!  
 #PG1000 . . . \$29



### Dysphagia App

swallow physiology animations

State-of-the-art MBSImP animations. Examples of normal and impaired swallows. Ideal for patient education. Search "Dysphagia" in the App Store.

In the App Store!