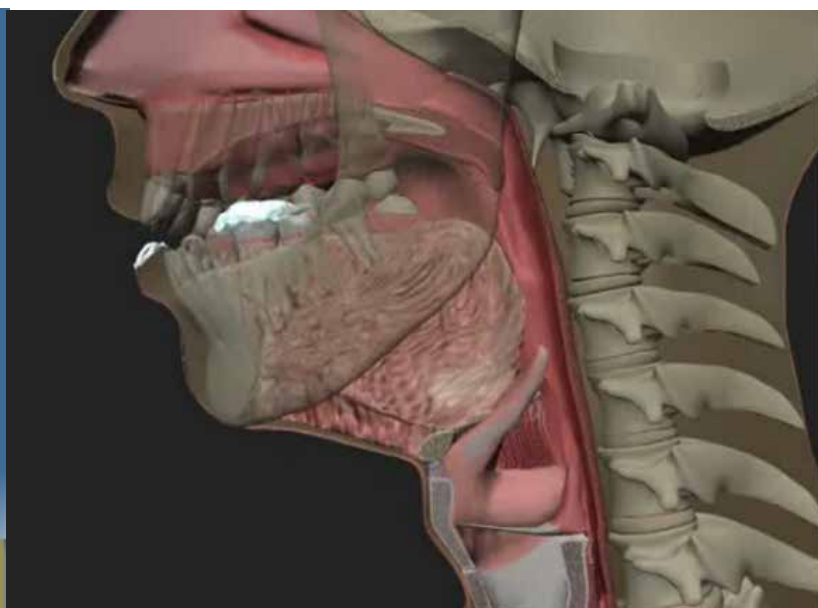


EDMONTON, AB

April 8-9, 2017



Dysphagia Treatment:

Evidence-Based Interventions for Swallowing Impairment Using a Standardized Approach Across the Continuum of Care

SEMINAR DESCRIPTION

Seminar content will benefit Speech-Language Pathologists across the continuum of care, including SLPs who conduct MBS studies and SLPs who develop and execute treatment plans for dysphagic patients. Focus will be the adult population and participants do not need to conduct MBS studies to benefit from the content presented. In fact, clinicians who do not have access to comprehensive examinations will be introduced to standardized interpretation of MBSs from referring facilities. Participants will learn how a standardized assessment is changing dysphagia service delivery and producing better treatment outcomes. Specific areas of focus will include:

Assessment. Discussed first will be a standardized approach to assessment — one that focuses on specific physiologic impairment(s) and not solely on the presence or absence of aspiration. Presented will be 17 physiologic components necessary for the execution of normal swallowing and why each component should be assessed in all patients as part of a complete examination. Videofluoroscopic radiographs, paired with physiology animations, and detailed anatomic medical illustrations of the muscles and nerves involved in each component will be the method for instruction. A novel approach for classifying dysphagia severity using a combination of physiologic and patient oriented measures will be introduced.

Treatment. Next, this seminar will link the impaired physiologic components with evidence-based interventions to specifically target swallowing impairment. Case-based instruction will demonstrate the application of targeted interventions and treatment planning based on assessment outcomes in patients with dysphagia related to neurologic disorders, cancers of the head and neck, and pulmonary disease. Evidence-based interventions including demonstrations of visual feedback and training methods for strength training and respiratory swallowing coordination will be illustrated.

Outcomes. Formulation of appropriate treatment goals using the approach and association of impairment scores to overall dysphagia severity will be introduced. Participants will learn to apply and track the outcomes of treatments that target the physiologic components of swallowing toward optimization of function. Tracking swallowing outcomes (physiologic linked to functional and patient reported) over time and throughout the healthcare continuum will be demonstrated.

Content Disclosure: This CE seminar will reference the MBSImP component scoring system. Other assessment protocols for planning intervention programs will receive limited or no coverage. See speaker bio for financial and non-financial disclosures.

Offered for 10 CEEs
1.0 ASHA CEUs



SPEAKER

Bonnie Martin-Harris,
PhD, CCC-SLP, BCS-S, ASHA Fellow

Bonnie Martin-Harris, PhD, CCC-SLP, BCS-S, is a Professor in the Department of Communication Sciences and Disorders and Associate Dean for Academic Affairs in the School of Communication at Northwestern University. She is a Past-President of the Dysphagia Research Society, past Chair of the Specialty Board for Board Certification in Swallowing and Swallowing Disorders (BCS-S), and Associate Editor for the Dysphagia Journal.

She is an ASHA Fellow, recipient of the 2016 Admiral Albert J. Baciocco Innovation Award – Medical University of South Carolina (MUSC), Honorary Member of the MUSC Chapter of The National Academy of Inventors, 2010 MUSC College of Health Professions Scholar of the Year Award, and associate member of the Academy of Otolaryngology-Head and Neck Surgery and the American Head and Neck Society.

Dr. Martin-Harris is the author and developer of the first standardized method for videofluoroscopic assessment of swallowing impairment (Modified Barium Swallowing Impairment Profile, MBSImP™), translated to research and clinical practice in the United States, Canada and 13 additional countries.

Speaker Financial Disclosures:

Financial - Presenter's former employer, Medical University of South Carolina (MUSC), receives royalty payments from Northern Speech related to enrollment tuition of the MBSImP Online Training.

Financial - Presenter receives honorariums and royalties related to CE seminars, online CEU courses and printed materials she has developed for Northern Speech.

Financial - Research and development of MBSImP partially funded by grants from Bracco Diagnostics.

Nonfinancial - No relevant nonfinancial relationships to disclose.



325 Meecher Road | P.O. Box 1247 Gaylord, MI | 49734

Children With Apraxia

EDMONTON, AB
APRIL 7, 2017

Nancy Kaufman,
MA, CCC-SLP

Dysphagia Treatment

EDMONTON, AB
APRIL 8-9, 2017

Bonnie Martin-Harris,
PhD, CCC-SLP

SPEECH PATHOLOGY UPCOMING CONFERENCES

Evaluation and Treatment of Children With Apraxia of Speech (6 CEEs)

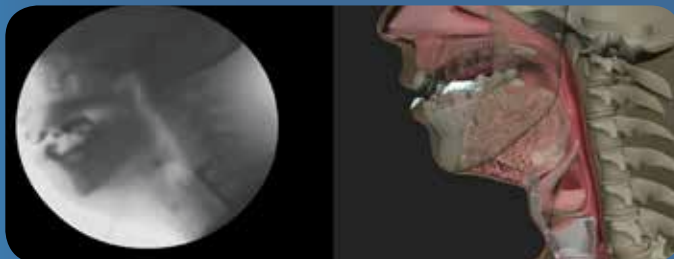
EDMONTON, AB
April 7, 2017



Speaker:
Nancy Kaufman

Dysphagia Treatment: Evidence-Based Interventions for Swallowing Impairment Using a Standardized Approach Across the Continuum of Care (10 CEEs)

EDMONTON, AB
April 8-9, 2017



Speaker:
Bonnie Martin-Harris



Sponsor: Northern Speech Services



PRSRT STD
U.S. POSTAGE
PAID
Petoskey, MI
Permit No. 110



> YOUR SPEECH PATHOLOGY HEADQUARTERS

Visit: www.NorthernSpeech.com

Sponsored by:



EDMONTON, AB
April 7, 2017



Evaluation and Treatment of Children With Apraxia of Speech

Learn:

- Strategies to help children with CAS to become effective vocal communicators.
- Specific steps of the *Kaufman Speech To Language Protocol (K-SLP)* for both evaluation and treatment of CAS.
- How to identify which vowels, consonants and syllable shapes are within the child's repertoire and whether or not there are core characteristics of CAS.
- How to incorporate phonemic simplification, successive word approximations and pivot syllables into therapy for children with CAS.

SPEAKER:

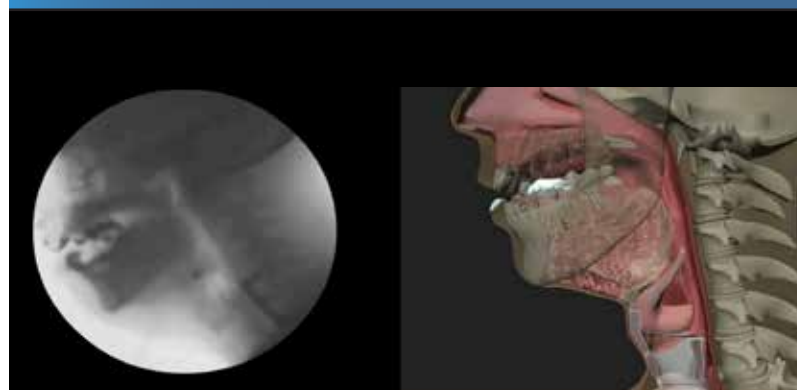
Nancy R. Kaufman,
MA, CCC-SLP

Offered for 6.0 CEEs
0.6 ASHA CEUs



Speech-Language & Audiology Canada
Orthophonie et Audiologie Canada
Communicating care | La communication à cœur

EDMONTON, AB
April 8-9, 2017



Dysphagia Treatment:

Evidence-Based Interventions for Swallowing Impairment Using a Standardized Approach Across the Continuum of Care

Learn:

- How a standardized assessment is changing dysphagia service delivery and producing better treatment outcomes.
- The 17 physiologic components necessary for the execution of normal swallowing and why each component should be assessed in all patients.
- To link the impaired components to targeted interventions and treatment planning for patients with neurologic disorders, cancers of the head and neck, and pulmonary disease.

Content will benefit both SLPs who conduct MBS studies and SLPs who develop and execute treatment plans for dysphagic patients.

SPEAKER:

Bonnie Martin-Harris,
PhD, CCC-SLP, BCS-S,
ASHA FELLOW

Offered for 10 CEEs
1.0 ASHA CEUs

EDMONTON, AB

April 7, 2017

Learn how incorporating phonemic simplification into your treatment sessions can quickly and dramatically improve speech intelligibility.



Evaluation and Treatment of Children With Apraxia of Speech

SEMINAR DESCRIPTION

Children with apraxia of speech (CAS) display a unique set of challenges for the speech-language pathologist. These children are often unable to speak or are unintelligible because they either lack an adequate repertoire of consonants and vowels in isolation, or because they have difficulty combining the oral motor movements necessary to sustain the motor plan of words. These characteristics of CAS require specific strategies and methods to obtain positive therapy outcomes that allow children with CAS to become effective vocal communicators.

This clinically-based seminar will discuss the *Kaufman Speech To Language Protocol (K-SLP)* for both evaluation and treatment of CAS. The evaluation segment will focus on identifying which vowels, consonants and syllable shapes are within the child's repertoire and whether or not there are core characteristics of CAS so specific and targeted interventions can be planned. The extensive treatment segment will explain how to incorporate phonemic simplification, successive word approximations and pivot syllables, words, and phrases into therapy and why these evidence-based methods have proven highly effective for CAS and other sound disorders. Actual treatment session video clips will be shown to demonstrate to participants how they can move children with CAS and other sound disorders from a simple core vocabulary to phrases and eventually to sentences and even to conversational speech.

Content Disclosure: This presentation will focus exclusively on the Kaufman Speech to Language Protocol. Other treatment approaches will receive limited or no coverage during this lecture.

See more details on this seminar: Apraxia of Speech



SPEAKER

Nancy R. Kaufman, MA, CCC-SLP

Nancy R. Kaufman, MA, CCC-SLP, is the owner and Director of the Kaufman Children's Center for Speech, Language, Sensory-Motor, and Social Connections in West Bloomfield, Michigan. Over the past 30 years Nancy has developed and perfected highly effective and evidence-based methods and strategies to evaluate and treat children with childhood apraxia of speech (CAS). Nancy's current Protocol to address CAS, The Kaufman Speech to Language Protocol (K-SLP), has been evolving since 1979. The K-SLP is rooted in teaching strategies of applied behavioral analysis and the principles of motor learning. Some of the strategies include shaping successive word approximations toward target syllables and words, teaching compensatory placements for vowels and consonants of which the child is not stimutable, implementing pivot syllables, words and phrases, as well as multisensory cueing and scripting towards functional and effective expressive language. Nancy has trained over 35,000 SLPs to implement her protocol and families from around the world bring children with CAS to her clinic to receive intensive therapy.

Nancy was the recipient of The 2010 Michigan State University College of Communication Arts & Sciences Outstanding Alumni Award, The 2011 Michigan-Speech-Language-Hearing Association Distinguished Service Award, and The 2015 Wayne State University Distinguished Alumni Award. Nancy also serves on the Professional Advisory Board of the Childhood Apraxia of Speech Association of North America. She is also the author of several highly effective treatment materials that address CAS and other sound disorders. In addition, many specialists in the field of applied verbal behavior have adopted the K-SLP for children with autism spectrum disorder.

Speaker Disclosure:

Financial — Nancy Kaufman is presenter of CE seminars sponsored by Northern Speech Services; receives speaking fees.

Financial — Nancy Kaufman is author of online CE courses sponsored by Northern Speech Services; receives royalty payments.

Financial — Nancy Kaufman is Owner and Director of Kaufman Children's Center for Speech, Language, Sensory-Motor, and Social Connections, Inc; ownership interests.

Financial — Nancy Kaufman is author of treatment materials published by Northern Speech Services; receives royalty payments.

Financial — Nancy Kaufman is author of treatment materials that are self-published; Northern Speech purchases and distributes these products.

Nonfinancial — Nancy Kaufman is on the Professional Advisory Board of the Childhood Apraxia of Speech Association of North America (CASANA); receives no compensation.

Offered for 6.0 CEEs
0.6 ASHA CEUs

See more details on this seminar: Dysphagia Treatment

888.337.3866 | NorthernSpeech.com



EDMONTON, AB

APRIL 7, 2017

Evaluation and Treatment of Children With Apraxia of Speech

Edmonton, AB
Friday, April 7, 2017

Edmonton Marriott at River Cree Resort
300 East Lapotac Blvd
Enoch, AB T7X 3Y3
Phone: 780-484-2121

Parking: Free

Sleeping Rooms: A limited block of rooms has been set aside for this event. Please call the Marriott directly at 800-960-4913 and reference the Northern Speech Services room block for special rates.

Tuition (US dollars)

\$199 Individual
\$189* each for groups of 2+
\$159* each for groups of 5+

**Groups MUST register together*

SPACE IS LIMITED AND REGISTRATION MUST BE CONFIRMED BY CREDIT CARD, CHECK OR PURCHASE ORDER.
(Make check payable to NSS.)

ACCREDITATION



Northern Speech Services is approved by the Continuing Education Board of the American Speech-Language-Hearing Association (ASHA) to provide continuing education activities in speech-language pathology and audiology. See course information for number of ASHA CEUs, instructional level and content area. ASHA CE Provider approval does not imply endorsement of course content, specific products or clinical procedures.



Speech-Language & Audiology Canada
Orthophonie et Audiologie Canada
Communicating care | La communication à coeur

Offered for 6 CEEs.

This course is offered for **0.6 ASHA CEUs** (Intermediate level, Professional)

Northern Speech Services' continuing education activities are eligible for Speech-Language and Audiology Canada (SAC) Continuing Education Equivalents (CEEs) in speech-language pathology. SAC CEE approval does not imply endorsement of course content, specific products or clinical procedures.

SEMINAR OUTLINE

7:30-7:50	Check In and Onsite Registration (Coffee and Tea)
8:00-8:30	Overview of Kaufman Speech to Language Protocol (K-SLP)
8:30-9:00	Shaping Successive Approximations, Word Simplifications and Implementation of Phonological Processes
9:00-9:30	Evidence-Based Practice: Research on the K-SLP Method
9:30-9:45	Break
9:45-11:15	The 6 Steps of the K-SLP: Detailed Descriptions and Videos of Evaluation and Treatment Techniques
11:15-12:15	Lunch (on your own)
12:15-1:45	More on Evaluations and Establishing IEP Goals
1:45-2:00	Break
2:00-2:30	Cueing and Scripting Techniques To Move Into Functional Expressive Language
2:30-3:00	More Treatment Techniques and Refinement & Integration Skills
3:00-3:30	Special Populations To Include Autism Spectrum Disorders; Pre/Post Video Evidence of K-SLP Effectiveness
3:30	Adjourn, Sign Out and Certificates



"A wealth of practical information presented in a lively and easy-to-understand manner!"
One of the best courses I've attended!"

Space is limited. Register today at NorthernSpeech.com/seminars

REGISTER TODAY!



SEMINAR OBJECTIVES

At seminar conclusion, participants will be able to:

- Describe a hierarchy of simple to complex motor-speech skills.
- Utilize this hierarchy to evaluate children who have severe speech disorders.
- Implement a specific treatment approach using phonological simplifications for children with apraxia of speech.
- List apraxia treatment techniques to include shaping word approximations.
- Analyze video clips to establish goals per this approach.
- Understand and analyze a norm-referenced, standardized test which relates directly to this approach in order to identify this unique population of children.

INTENDED AUDIENCE: Speech-Language Pathologists in clinical practice who evaluate and treat children ages 2-8 with speech & language disorders. Parents of children with apraxia of speech are also invited to attend, though the seminar retains a clinical focus.
LEVEL: Intermediate.

REGISTRATION INFORMATION

4 Ways to Register!

- Online: NorthernSpeech.com/seminars
- Phone: 888-337-3866
- Fax: 888-696-9655
- Mail: NSS, P.O. Box 1247, Gaylord, MI 49734

- EDMONTON, AB • April 7, 2017 (#2294) Apraxia
- EDMONTON, AB • April 8-9, 2017 (#2297) Dysphagia Treatment

Please print very clearly

Seminar Location _____ Seminar Date _____

Name of Registrant _____

ASHA Account Number (if member) _____

Provincial / State Lic Number _____

Discipline for CEE / CEU processing ☐ SLP ☐ Parent ☐ Other _____

Work Facility Name & Address _____

Your Employment Setting ☐ Hospital ☐ Private Practice Clinic ☐ University Faculty

☐ Long-Term Care ☐ School ☐ Home Health ☐ Student ☐ Other _____

Home Address _____

Please indicate numbers where you can be reached regarding seminar changes or updates

Phone: Work (____) _____

Home (____) _____

Cell (____) _____

Email Address _____

Tuition Amount \$ _____ US Funds

Credit Card # _____

(Visa, MC, Amex, Discover)

Expiration Date _____ CV #* _____

*CV# is the last 3 digits on the signature panel of Visa/MC/Discover * 4 digit # above card # on front of Amx

Card Holder's Name _____

Card Holder's Signature _____

Card Holder's Address _____

Purchase Order # _____

Check Issued From _____

PO Contact Phone # _____

Mail Registration To: NSS, P.O. Box 1247, Gaylord, MI 49734
or Call: 888.337.3866 Fax: 888.696.9655 email: info@northernspeech.com

LATE FEE: Add \$20 if registering less than two weeks prior to seminar.
CANCELLATIONS: Tuition will be refunded less a \$25 processing fee, if written notification is received by NSS up to two weeks prior to the seminar. Two weeks to 72 hours prior to seminar date 50% refund; 72 hours or less no refund. NSS reserves the right to cancel the event 7 days prior to the seminar date.

EDMONTON, AB

APRIL 8-9, 2017

Dysphagia Treatment:

Evidence-Based Interventions for Swallowing Impairment Using a Standardized Approach Across the Continuum of Care

EDMONTON, AB
April 8-9, 2017

Royal Alexandra Hospital Robbins Learning Centre
10245 – 111 Avenue NW
Edmonton, AB T5H 3V9

Phone: 780-735-4111

Meeting Room: We will meet in Robbins Learning Centre on Level G. The Robbins Centre is within the Lois Hole Hospital for Women.

Parking: Onsite parking available for \$16 per day. Use the "Northeast Parkade" accessed via 102 St.

Hotel Accommodations: No room blocks have been secured so negotiate your best rate.

Best Western Plus
(about 5 minute drive to seminar venue)
11310 109th Street
Edmonton, AB T5G 2T7
Phone: 780-479-2042

Marriott Courtyard
(about a 10 minute drive to seminar venue)
1 Thornton Ct NW
Edmonton, AB T5J 2E7
Phone: 780-423-9999

Holiday Inn Express
(about a 10 minute drive to seminar venue)
10010 104th Street NW
Edmonton, AB T5J 0Z1
Phone: 780-423-2450

Tuition (US dollars)

\$325 Individual
\$305 each for groups of 2+
\$295 each for groups of 5+

**Groups MUST register together*

SPACE IS LIMITED AND REGISTRATION MUST BE CONFIRMED BY CREDIT CARD, CHECK OR PURCHASE ORDER.

Offered for 10 CEEs
1.0 ASHA CEUs

ACCREDITATION



and audiology. See course information for number of ASHA CEUs, instructional level and content area. ASHA CE Provider approval does not imply endorsement of course content, specific products or clinical procedures.



Speech-Language & Audiology Canada
Orthophonie et Audiologie Canada
Communicating care | La communication à coeur

Northern Speech Services' continuing education activities are eligible for Speech-Language and Audiology Canada (SAC) Continuing Education Equivalents (CEEs) in speech-language pathology. SAC CEE approval does not imply endorsement of course content, specific products or clinical procedures.

Offered for 10 CEEs.

Who Should Attend?

SLPs who work with adult dysphagic patients across the care continuum, including:

- Skilled Nursing
- Long-Term Care
- Home Health
- Graduate Students
- Hospital Acute
- Hospital Rehab
- Hospital Outpatient
- University Faculty

Attendees do not need to conduct MBS exams to benefit from this course.

SEMINAR OBJECTIVES

At seminar conclusion, participants will be able to:

- Identify the physiologic mechanisms of swallowing.
- List the critical components of swallowing assessment and impairment.
- Explain the coordination and optimal patterning between breathing and swallowing function.
- Estimate the severity of swallowing impairment using MBSImP scores and patient oriented measures.
- Develop targeted, evidence-based treatment plans including the establishment of measureable goals.
- Reference the results of tested interventions that directly target cross-system interactions of the upper aerodigestive tract.
- Summarize the importance of standardized training, assessment, outcome tracking, and reporting.

Intended Audience: Speech-language pathologists who evaluate and treat adult patients with dysphagia across the continuum of care, including skilled nursing facilities, home health, outpatient and hospital settings. Content presented will benefit both SLPs who conduct MBS studies and SLPs who treat patients. Participants do not need to conduct MBS studies to benefit from the content presented.



Space is limited. Register today at NorthernSpeech.com/seminars
Phone: 888-337-3866 Fax: 888-696-9655 info@northernspeech.com



Speech-language pathologists who work in nursing homes, home health, rehab centers and hospital in and out patient settings can all benefit from this program.

SEMINAR OUTLINE

7:30-7:55	Check In and Onsite Registration (Coffee and Tea)
8:00-8:15	A Place for Standardization in Individualized Dysphagia Treatment
8:15-9:30	Physiologic Foundation of Swallowing Function and Impairment – Discovery and Innovation
9:30-9:45	Break
9:45-11:00	Targeted Treatment: Front Line Tactics
11:00-11:45	Translating Assessment Results to Physiologically Targeted Treatment: Compensation, Adaptation, Strengthening, Agility
11:45 – 12:45	Break (Lunch on own)
12:45 – 2:30	Demonstration and Implementation of Assistive Technology for Guided Visual, Auditory and Tactile Feedback During Swallowing Retraining
2:30-2:45	Break
2:45-4:00	Respiratory-Swallowing Coordination and Training: Effects on Airway Protection and Pharyngeal Clearance
4:00	Adjourn and sign out

DAY TWO

7:30-7:55	Sign in
8:00-8:45	Training Paradigms and Goal Setting
8:45-9:45	Standardized Reporting: Progress and Outcome Measures, Optimizing Reimbursement
9:45-10:00	Break
10:00-12:00	Grand Rounds: Integration of Best Practice and Standardized Assessment in Swallowing Treatment
	Case-Based Learning: Neurologic Diseases and Conditions, Head and Neck Cancer; Pulmonary Disease, Frail Elderly
12:00	Adjourn, sign out and pick up certificate

REGISTER TODAY!

RELATED LEARNING RESOURCES

Standardized Assessment of the Swallowing Mechanism



Online CEE course.
#e001 \$124 USD 6 CEEs
To Enroll: NorthernSpeech.com/CEUs

#e001 Online MBSImP™ Introduction Seminar
This online video course provides a comprehensive introduction to the MBSImP standardized approach and impairment scoring. Serves as an excellent preparatory course prior to enrolling in the MBSImP™ Standardized Training and Reliability Testing.

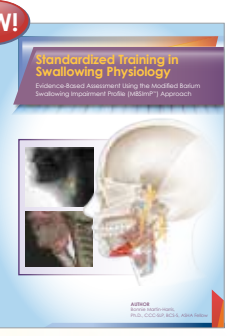


Online CEE course.
#e01 \$600 USD 21 CEEs
Learn more at www.NorthernSpeech.com/mbsimp

#e01 MBSImP™ Standardized Training and Reliability Testing
Online training utilizing videofluoroscopic images paired and synchronized with custom swallow physiology animations to teach learners systematically the 17 physiologic components and standardized impairment scores associated with each that together comprise the MBSImP standardized assessment.

Standardized Training in Swallowing Physiology: Evidence-Based Assessment

This manual facilitates a deeper understanding of the swallowing mechanism, which is critical for accurate assessment and targeted treatment. Appropriate for all clinicians working with dysphagic patients across the care continuum. Softcover; 76 pages
#SP1000 \$59 USD
To Purchase: NorthernSpeech.com



Softcover manual.



- Over 100 clinically relevant, treatment-focused programs
- Topics include cognition, dysphagia, voice, ethics, counseling, autism, apraxia, language and fluency
- Visit NorthernSpeech.com/CEUs

